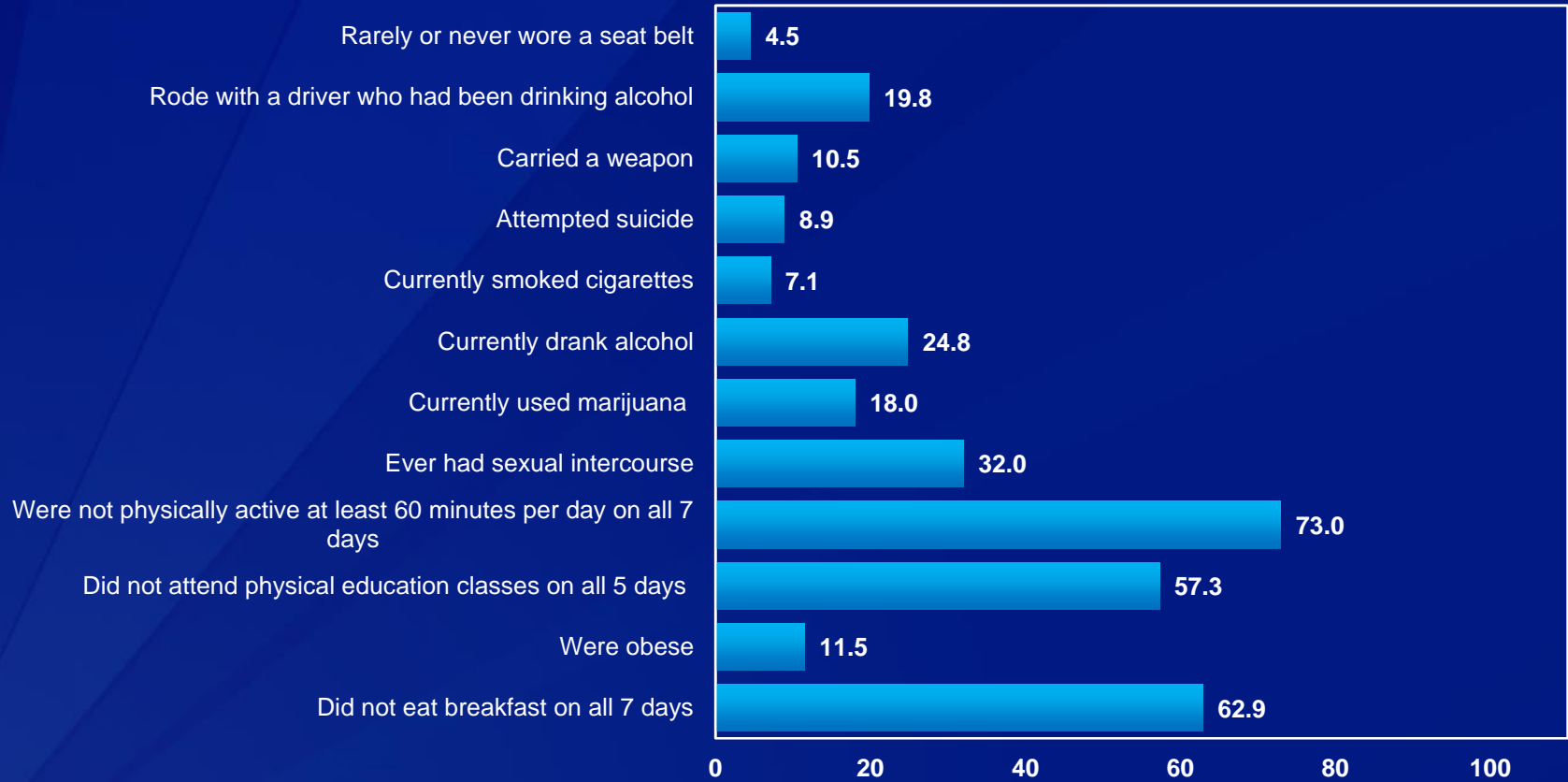


San Diego High School Survey

2015 Youth Risk Behavior Survey Results

Percentage of students who:



Note: This graph contains weighted results. See the corresponding summary tables for detailed explanation of data.

San Diego High School Survey

2015 Youth Risk Behavior Survey Results

Percentage of students who:

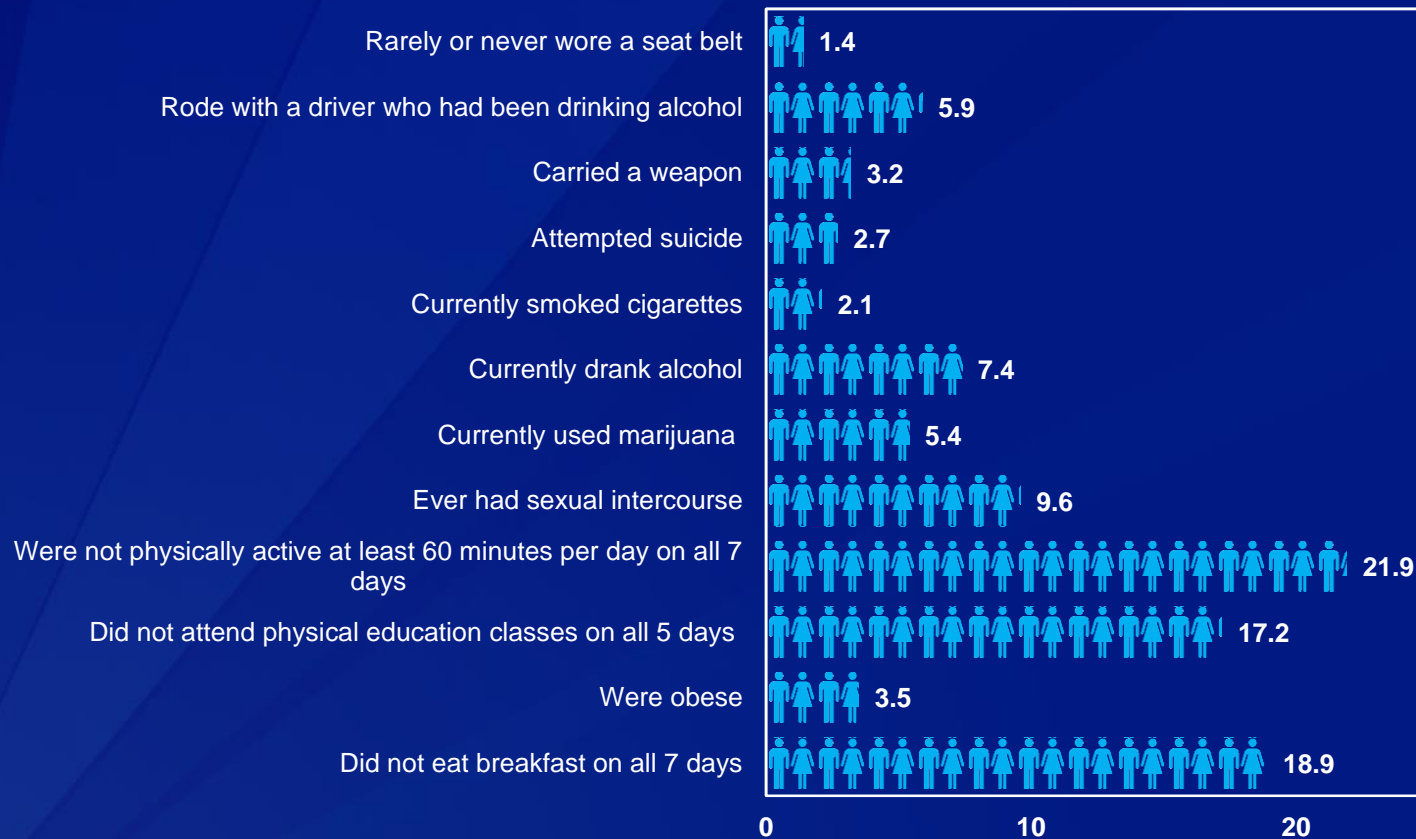


Note: This graph contains weighted results. See the corresponding summary tables for detailed explanation of data.

San Diego High School Survey

2015 Youth Risk Behavior Survey Results

Number of students in a class of 30 who:

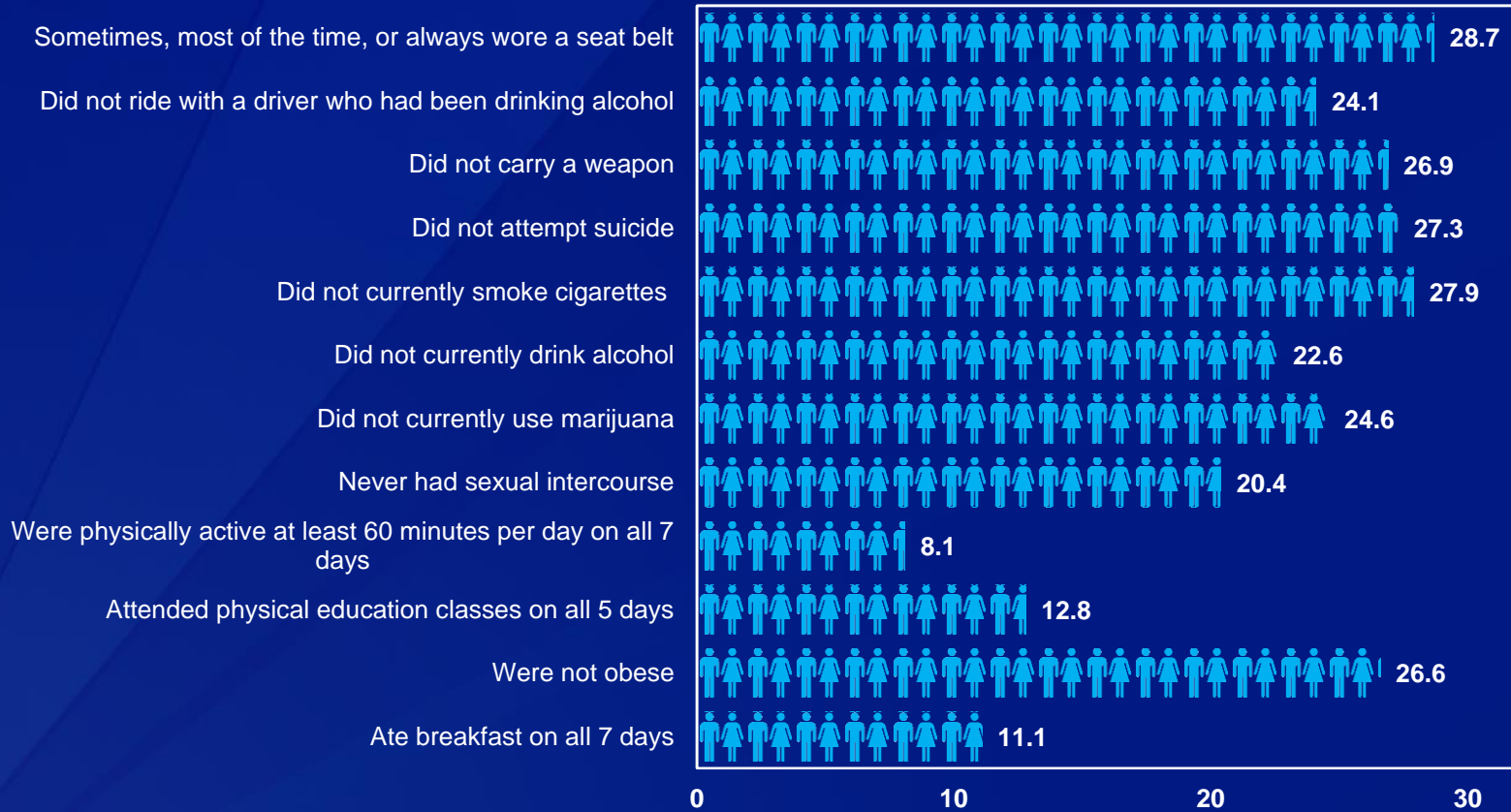


Note: This graph contains weighted results. See the corresponding summary tables for detailed explanation of data.

San Diego High School Survey

2015 Youth Risk Behavior Survey Results

Number of students in a class of 30 who:



Note: This graph contains weighted results. See the corresponding summary tables for detailed explanation of data.